



Bolted Two Piece
FLOATING BALL VALVE

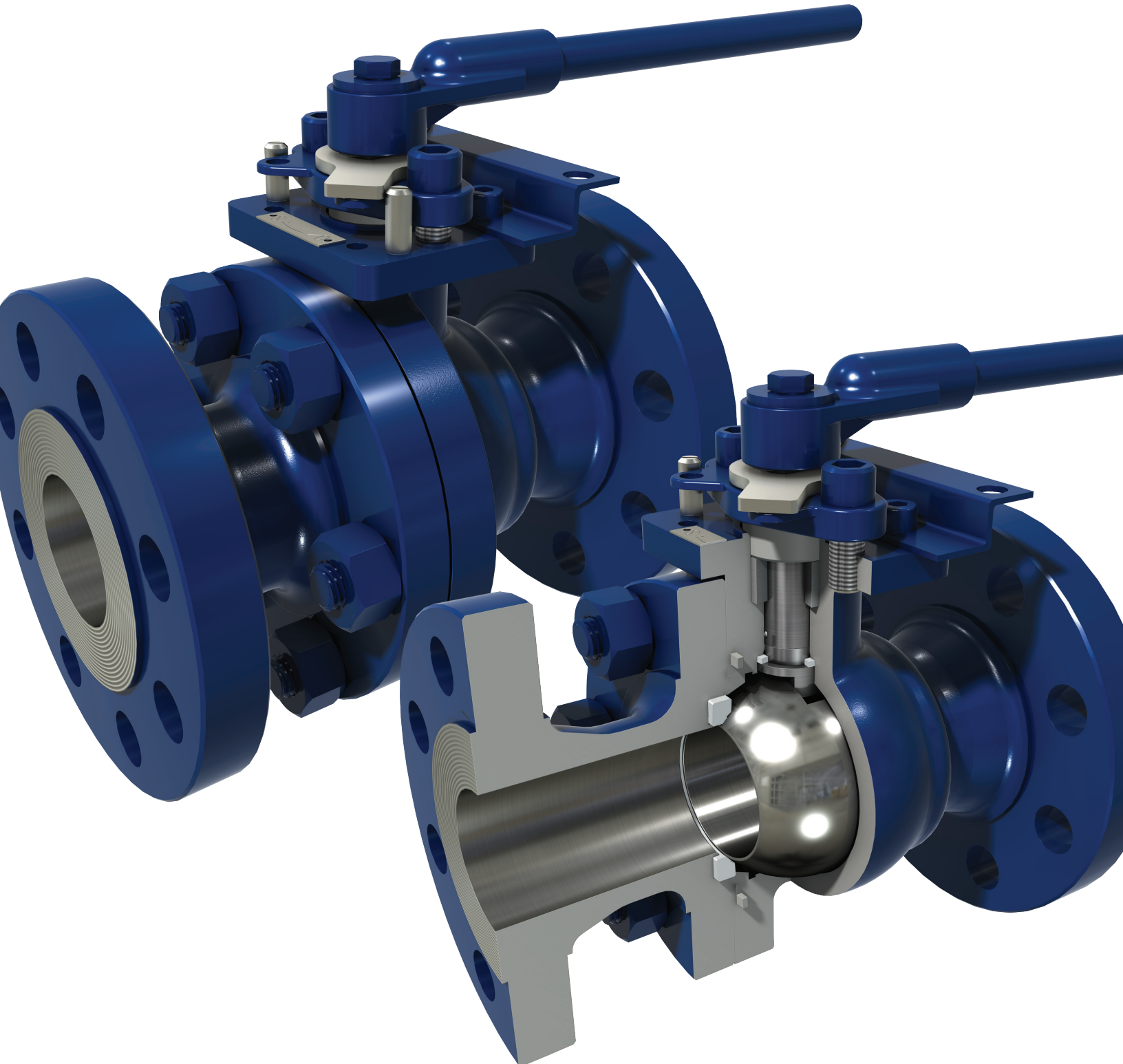




TABLE OF CONTENTS

Manufacturing range.....	Below
Key features & benefits.....	4
Cross sectional drawings.....	6
Sizes & dimensions.....	8
Top works dimensions.....	11
Torque data.....	13
Pressure/temperature chart.....	14
CV chart	14
Ordering information.....	15
Contact information and locations	Back cover

MERIDIAN™ FLOATING BALL VALVES

MANUFACTURING RANGE*

(Available in full and regular port)

Size	ASME 150	ASME 300	ASME 600	ASME 900	ASME 1500
1/2"	■	■	■		■
3/4"	■	■	■		■
1"	■	■	■		■
1 1/2"	■	■	■		■
2"	●	●	●	●	●
3"	●	●	●	▲	
4"	●	●	●		
6"	●	●			
8"	●	●			
10"	●				

- FP & RP
- FP only
- ▲ RP only

*Other sizes available upon request.

.....

48/24 *Standard* WARRANTY

Meridian™ products feature an industry leading warranty of 48 months from date of shipment or 24 months from the date of start-up (whichever is sooner) for all Meridian™ brand API 6D check valves, flanged or buttweld trunnion ball valves, and floating ball valves; cast steel gate, globe and check valves; rack & pinion actuators; pneumatic and hydraulic scotch-yoke actuators.

.....

SIL *Rated*

Meridian™ trunnion ball valves, floating ball valves, cast steel gate and globe valves are certified for use in SIL 3 applications.

.....



MERIDIAN™ KEY FEATURES & BENEFITS

GENERAL FEATURES

- 2 piece bolted body design for ease of field service and maintenance
 - Cast steel 150, 300 & 600
 - Forged steel 600, 900 & 1500
- Fire safe design
- Standard valves meet NACE
- Extreme low torque for actuation savings
- ISO 5211 mounting flanges
- High life cycle
- Independent dual body seals
- Locking device to API 608
- Low emissions to API 641
- Gear operators and lifting lugs on 6" bore and larger
- Standard document package BS/EN 10204-3.1
- Exceeds ASME B16.34 minimum wall thickness
- **All Meridian™ 3 piece forged trunnion ball valves and 2 piece cast floating ball valves are certified for use in Safety Integrity Level (SIL 3) applications.**

STEM DESIGN FEATURES

- Blowout proof stem
- Double antistatic stem
- Adjustable packing
- 2-bolt gland flange

SEAT DESIGN FEATURES

- Unique wide flexible seat rings
- Absolute seal in low and high pressure
- RPTFE (15-20% carbon fibre) in 150 & 300 ASME; Devlon V in 600-1500 ASME
- Self-relieving seats for automatic internal cavity relief

OPTIONAL FEATURES

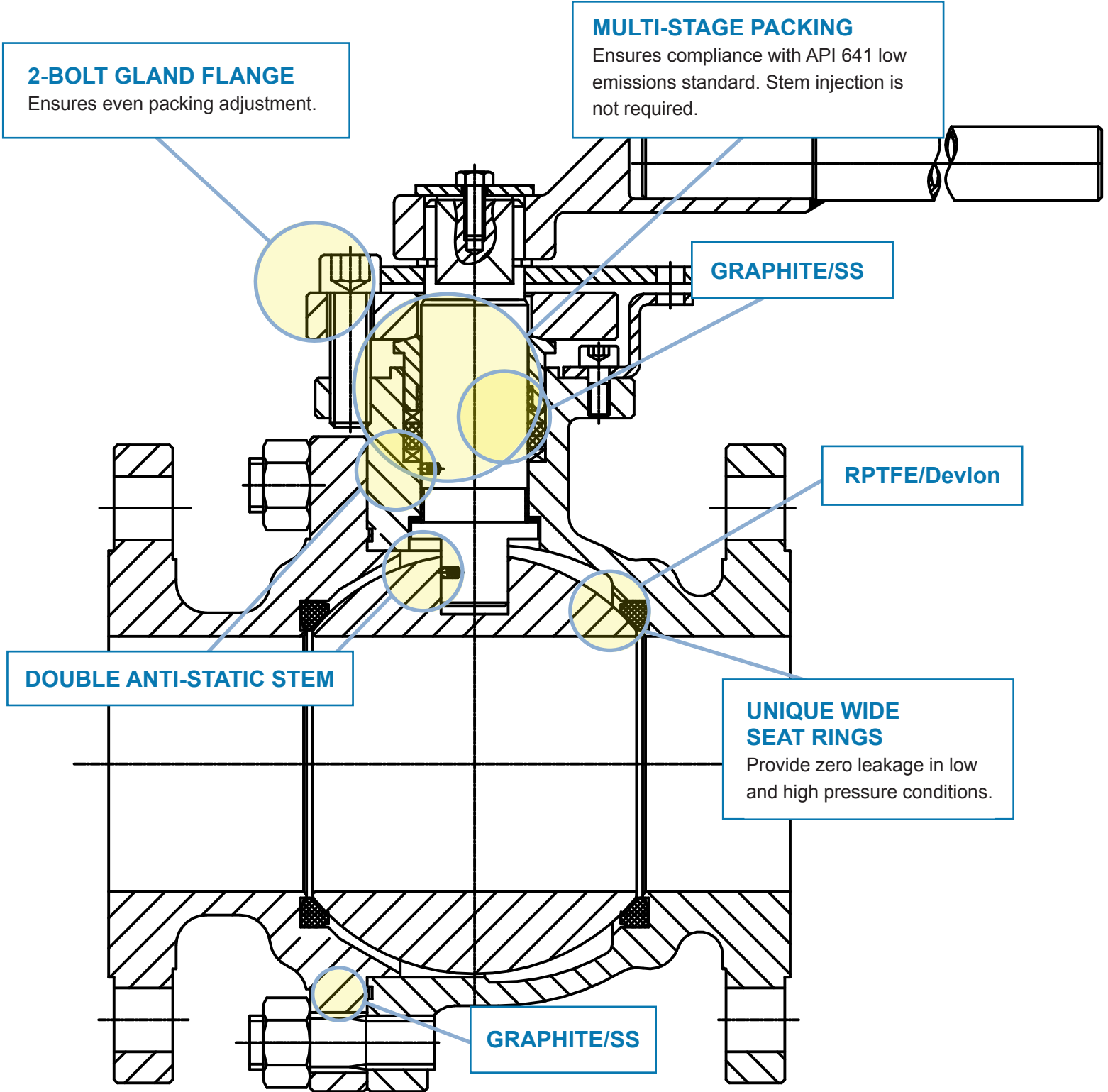
- Body may be coated for corrosion protection

CERTIFICATION & TESTING

Design Standard:	API 608 API 6D CSA Z245.15 CSA B51 ISO 17292
Fugitive Emissions:	API 641
Face to Face:	ASME B16.10
Flange:	ASME B16.5
Marking:	MSS SP-25
Inspection:	API 598
Pressure & Temp.:	ASME B16.34
Quality:	MSS SP-55
Fire Safe Design:	ISO 10497, API 607
Sour:	NACE MR 0175 ISO 15156
Pressure Testing:	API 6D and low pressure air seat test
Safety Integrity Level:	SIL 3

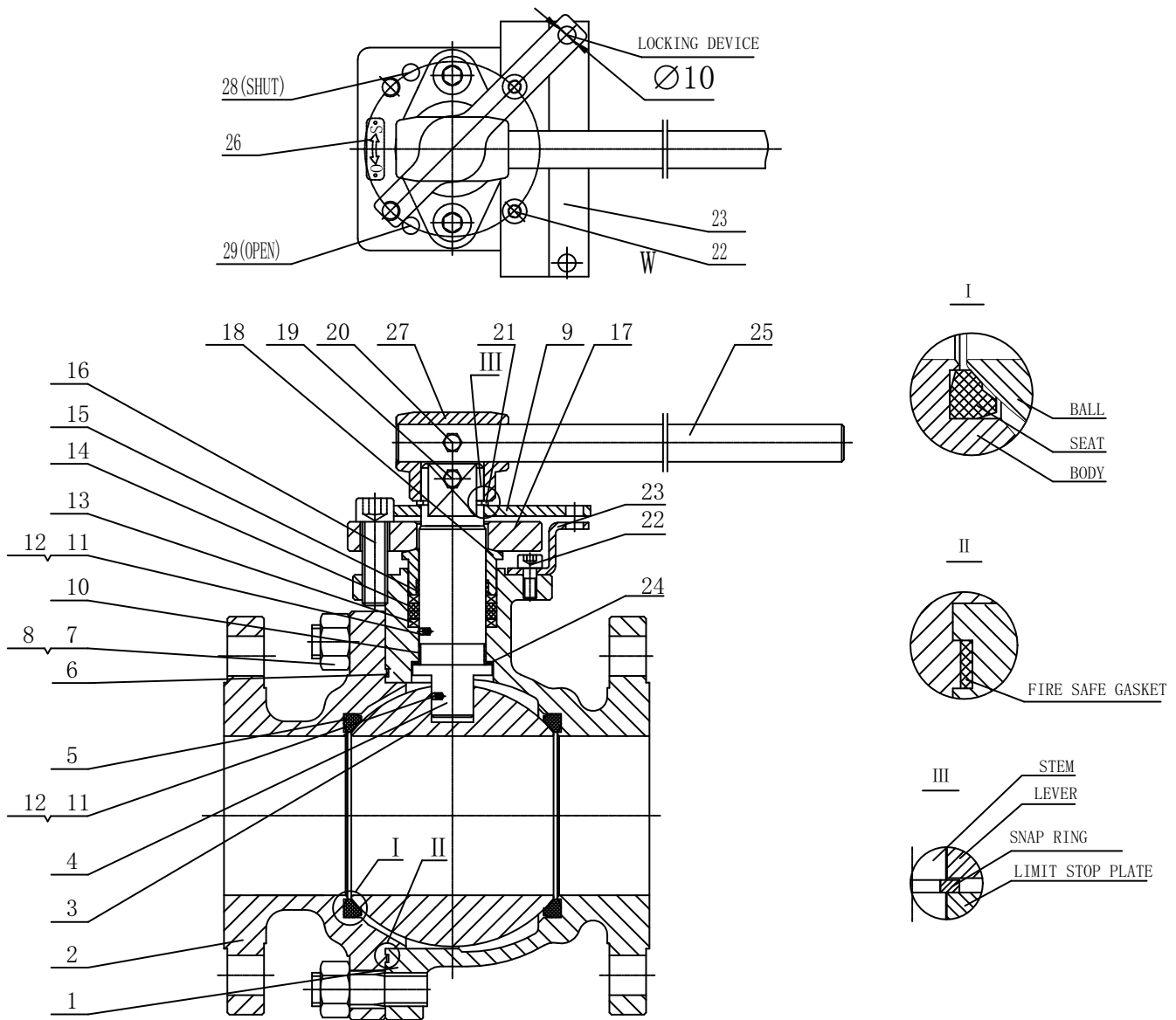
STATE OF THE ART API 6D FLOATING BALL VALVE

FOR THE WIDEST RANGE OF SERVICE APPLICATIONS



MERIDIAN™ CROSS SECTIONAL DRAWING

Floating Ball Valve, Full & Reduced Port, Lever Operated

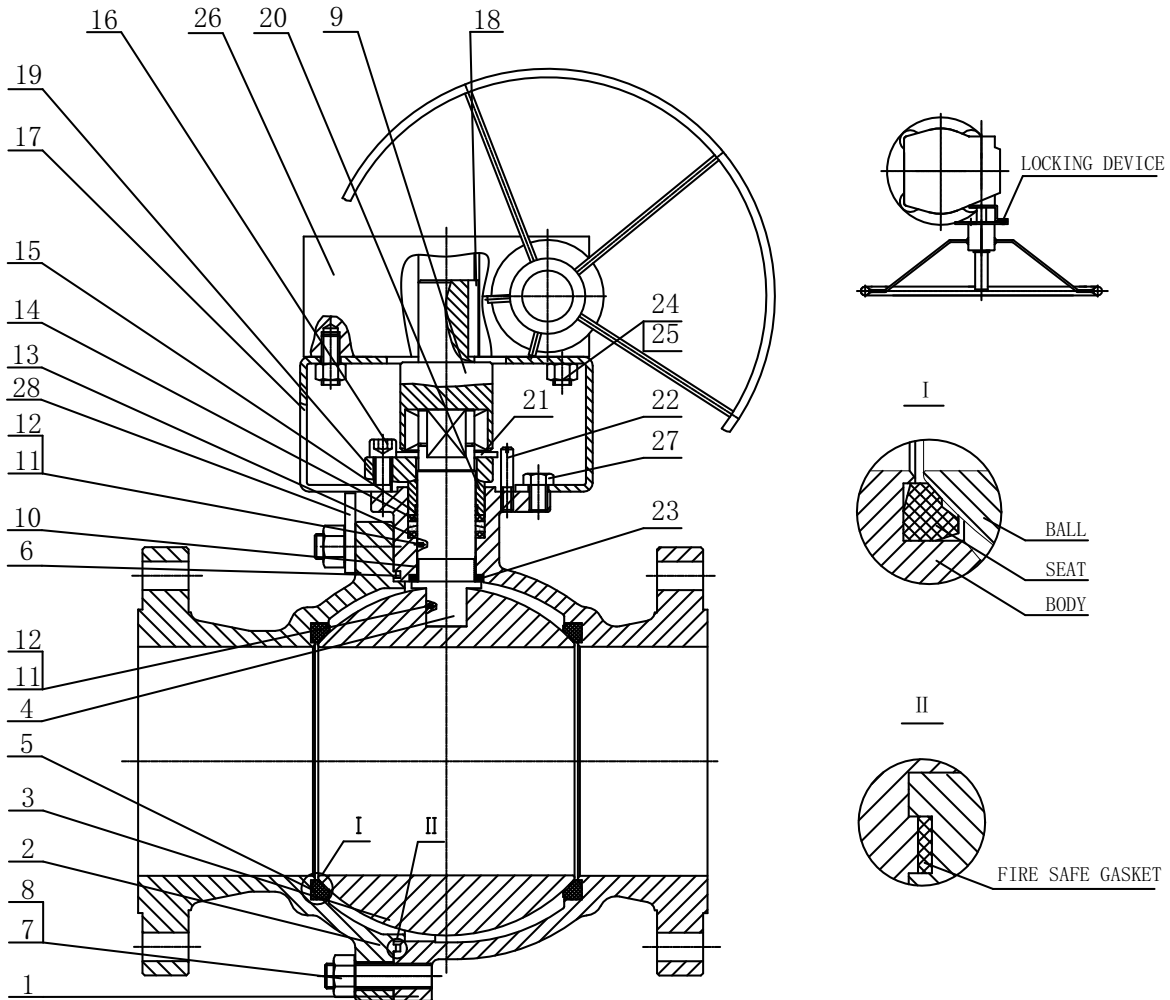


ITEM	DESCRIPTIONS	ITEM	DESCRIPTIONS	ITEM	DESCRIPTIONS
1	BODY	11	ANTISTATIC BALL	21	SNAP RING
2	END CAP	12	ANTISTATIC SPRING	22	ALLEN HEAD BOLT
3	BALL	13	FIRE SAFE PACKING	23	LOCKING PLATE
4	STEM	14	FIRE SAFE PACKING	24	THRUST WASHER
5	SEAT	15	BEARING	25	LEVER
6	FIRE SAFE GASKET	16	ALLEN HEAD BOLT	26	INDICATING PLATE
7	NUT	17	PACKING GLAND FLANGE	27	LEVER HEAD
8	STUD	18	PACKING GLAND RING	28	POSITION STOP PIN
9	LIMIT STOP PLATE	19	HEX HEAD BOLT	29	POSITION STOP PIN
10	BEARING	20	HEX HEAD BOLT		

NOTE: Drawings are representative, please contact Meridian for specific and current PDF drawings.

MERIDIAN™ CROSS SECTIONAL DRAWING

Floating Ball Valve, Full & Reduced Port, Gear Operated



ITEM	DESCRIPTIONS	ITEM	DESCRIPTIONS	ITEM	DESCRIPTIONS
1	BODY	11	ANTISTATIC BALL	20	PACKING GLAND RING
2	END CAP	12	ANTISTATIC SPRING	21	LIMIT STOP PLATE
3	BALL	13	FIRE SAFE PACKING	22	POSITION STOP PIN
4	STEM	14	FIRE SAFE PACKING	23	THRUST WASHER
5	SEAT	15	BEARING	24	NUT
6	FIRE SAFE GASKET	16	ALLEN HEAD BOLT	25	STUD
7	NUT	17	MOUNTING BRACKET	26	GEAR OPERATOR
8	STUD	18	KEY	27	HEX HEAD BOLT
9	GEAR OPERATOR DRIVE COUPLING	19	PACKING GLAND FLANGE	28	LIFTING LUGS
10	BEARING				

NOTE: Drawings are representative, please contact Meridian for specific and current PDF drawings.

MERIDIAN™ SIZES & DIMENSIONS

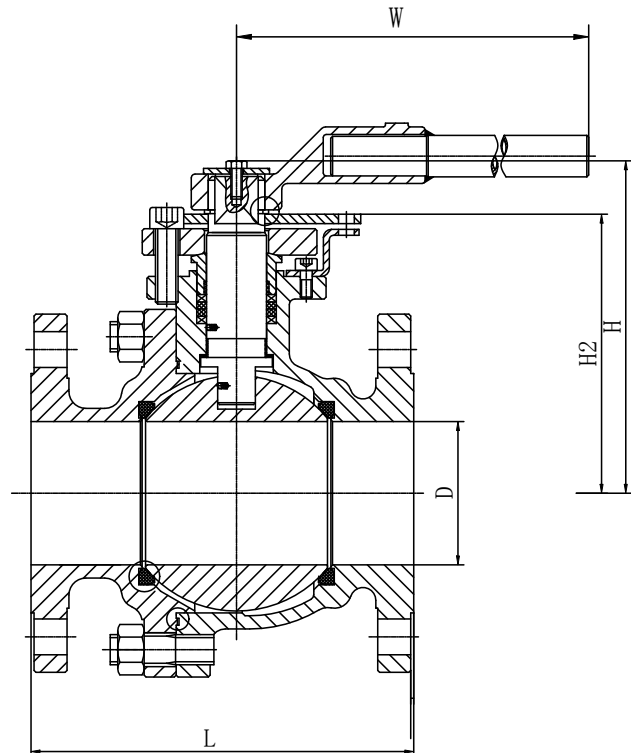
2-piece Floating Ball Valve Lever Operated

ASME CLASS 150

SIZE	D	L	H	H2	W	Weight
in	mm	mm	mm	mm	mm	kg
	in	in	in	in	in	lb
1/2	15	108	82	74	150	2.5
	0.59	4.25	3.23	2.91	5.91	5.51
3/4	19	117	90	74	150	3.2
	0.75	4.61	3.54	2.91	5.91	7.05
1	25	127	100	76	150	5.6
	0.98	5.00	3.94	2.99	5.91	12.35
1 1/2	38	165	110	88	300	7.2
	1.50	6.50	4.33	3.46	11.81	15.87
2 x 1 1/2	38	178	110	87.5	300	9.7
	1.50	7.01	4.33	3.44	11.81	21.38
2	50	178	135	106	300	9.8
	1.97	7.01	5.31	4.17	11.81	21.61
3 x 2	50	203	135	106	300	18
	1.97	7.99	5.31	4.17	11.81	39.68
3	75	203	176	148	400	20
	2.95	7.99	6.93	5.93	15.75	44.09
4 x 3	75	229	176	148	400	35
	2.95	9.02	6.93	5.83	15.75	77.16
4	100	229	196	168	460	35.2
	3.94	9.02	7.72	6.61	18.11	77.60
6 x 4	100.1	394	196	168	460	60
	3.94	15.51	7.72	6.61	18.11	132.28

ASME CLASS 300

SIZE	D	L	H	H2	W	Weight
in	mm	mm	mm	mm	mm	kg
	in	in	in	in	in	lb
1/2	15	140	83	74	150	2.60
	0.59	5.51	3.27	2.91	5.91	5.73
3/4	19	152	90	74	150	3.80
	0.75	5.98	3.54	2.91	5.91	8.38
1	25	165	100	76	150	6
	0.98	6.50	3.94	2.99	5.91	13.23
1 1/2	38	190	110	88	300	10.50
	1.50	7.48	4.33	3.46	11.81	23.15
2 x 1 1/2	38	216	110	87.5	300	15
	1.50	8.50	4.33	3.44	11.81	33.07
2	50	216	135	111	400	16
	1.97	8.50	5.31	4.37	15.75	35.27
3 x 2	50	282	135	111	400	31.2
	1.97	11.10	5.31	4.37	15.75	68.78
3	75	282	176	148	550	36
	2.95	11.10	6.93	5.83	21.65	79.37
4 x 3	75	305	176	148	550	57
	2.95	12.01	6.93	5.83	21.65	125.66
4	100.1	305	196	168	600	60
	3.94	12.01	7.72	6.61	23.62	132.28
6 x 4	100.1	403	196	168	600	83
	3.94	15.87	7.72	6.61	23.62	182.98



NOTE: Drawings are representative, please contact Meridian for specific and current PDF drawings.

MERIDIAN™ SIZES & DIMENSIONS

2-piece Floating Ball Valve Lever Operated

ASME CLASS 600

SIZE	D	L	H	H2	W	Weight
in	mm	mm	mm	mm	mm	kg
	in	in	in	in	in	lb
1/2	15	165	84	74	150	2.80
	0.59	6.50	3.31	2.91	5.91	6.17
3/4	19	190	90	74	150	5.30
	0.75	7.48	3.54	2.91	5.91	11.68
1	25	216	93	67	150	7
	0.98	8.50	3.66	2.64	5.91	15.43
1 1/2	38	241	134	88	400	13.60
	1.50	9.49	5.28	3.46	15.75	29.98
2 x 1 1/2	38	292	134	88	400	18.2
	1.50	11.50	5.28	3.46	15.75	40.12
2	50	292	135	107.5	550	22
	1.97	11.50	5.31	4.23	21.65	48.50
3 x 2	50	356	135	107.5	550	35
	1.97	14.02	5.31	4.23	21.65	77.16
3	75	356	183	153	700	40
	2.95	14.02	7.20	6.02	27.56	88.18
4 x 3	75	432	183	153	700	55
	2.95	17.01	7.20	6.02	27.56	121.25
4	100.1	432	254	195.5	850	80
	3.94	17.01	10.00	7.70	33.46	176.37
6 x 4	100.1	559	254	197	850	106
	3.94	22.01	10.00	7.76	33.46	233.69

ASME CLASS 1500

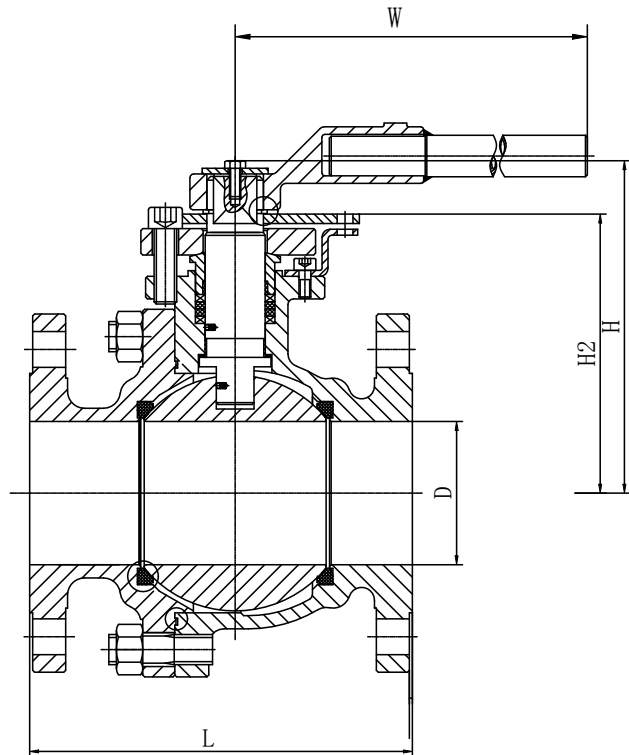
SIZE	D	L	H	H2	W	Weight
in	mm	mm	mm	mm	mm	kg
	in	in	in	in	in	lb
1/2	13	216	132.5	75	330	10
	0.51	8.50	5.22	2.95	12.99	22.05
3/4	19	229	136.5	76	330	14
	0.75	9.02	5.37	2.99	12.99	30.86
1	25	254	140	88	500	17
	0.98	10.00	5.51	3.46	19.69	37.48
1 1/2	38	305	170	98	600	28
	1.50	12.01	6.69	3.86	23.62	61.73
2 x 1 1/2	38	368	170	98	600	41
	1.50	14.49	6.69	3.86	23.62	90.39
2	49	368	187	116	700	40
	1.93	14.49	7.36	4.57	27.56	88.18

ASME CLASS 900

SIZE	D	L	H	H2	W	Weight
in	mm	mm	mm	mm	mm	kg
	in	in	in	in	in	lb
2 x 1 1/2	38	368	170	*	600	32
	1.50	14.49	6.69		23.62	70.55
2	49	368	175	*	700	40
	1.93	14.49	6.89		27.56	88.18
3 x 2	49	381	175	*	700	66
	1.93	15.00	6.89		27.56	145.50

NOTE: Drawings are representative, please contact Meridian for specific and current PDF drawings.

* Confirmation at time of order or upon request.



MERIDIAN™ SIZES & DIMENSIONS

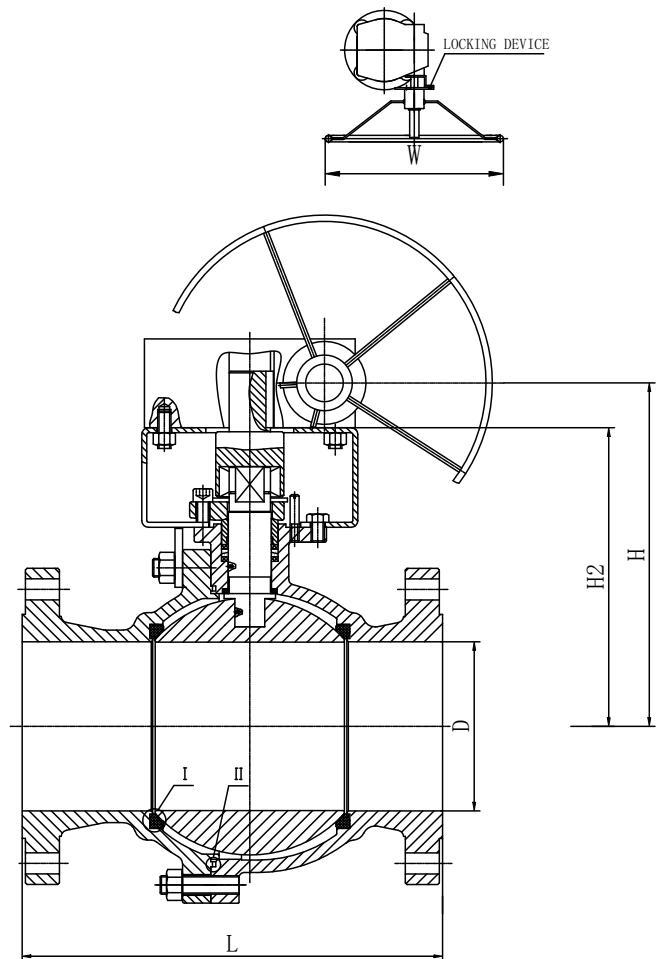
2-piece Floating Ball Valve Gear Operated

ASME CLASS 150

SIZE	D	L	H	H2	W	Weight
in	mm	mm	mm	mm	mm	kg
	in	in	in	in	in	lb
6	151	394	352	298	460	96
	5.94	15.51	13.86	11.73	18.11	211.64
8 x 6	151	457	352	301	460	120
	5.94	17.99	13.86	11.85	18.11	264.55
8	202	457	414	360	600	165
	7.95	17.99	16.30	14.17	23.62	363.76
10 x 8	202	533	414	360	600	145
	7.95	20.98	16.30	14.17	23.62	319.67
10	252	533	465	410	600	250
	9.92	20.98	18.31	16.14	23.62	551.15

ASME CLASS 300

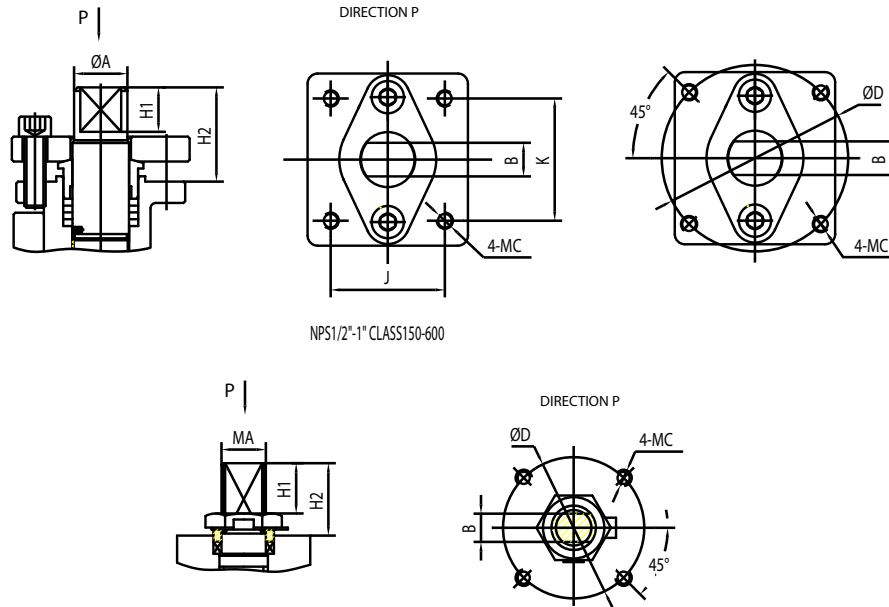
SIZE	D	L	H	H2	W	Weight
in	mm	mm	mm	mm	mm	kg
	in	in	in	in	in	lb
6	151	403	356	298	465	118
	5.94	15.87	14.02	11.73	18.31	260.14
8 x 6	151	502	356	298	465	191
	5.94	19.76	14.02	11.73	18.31	421.08
8	202	502	414	360	600	236
	7.95	19.76	16.30	14.17	23.62	520.29



NOTE: Drawings are representative, please contact Meridian for specific and current PDF drawings.

MERIDIAN™ TOP WORKS DIMENSIONS

½" to 10" 2-piece Floating Ball Valve



ASME CLASS 150

NPS	A	B	C	D	E	F	G	H1	H2	H3	I	J	K	ISO
in	mm	mm	mm	mm	mm	mm	mm	mm	mm	mm	mm	mm	mm	
1/2"	12	8	4-M6					7.5	18			31	31	
	0.47	0.31						0.30	0.71			1.22	1.22	
3/4"	12	8	4-M6					8.5	20.5			25	47	
	0.47	0.31						0.33	0.81			0.98	1.85	
1"	12	8	4-M6					9	22.5			29	53	
	0.47	0.31						0.35	0.89			1.14	2.09	
1 1/2"	20	14	4-M8	70				20	40					F07
	0.79	0.55		2.76				0.79	1.57					
2X1 1/2"	20	14	4-M8	70				20	40					F07
	0.79	0.55		2.76				0.79	1.57					
2"	20	14	4-M8	70				22	40					F07
	0.79	0.55		2.76				0.87	1.57					
3X2"	20	14	4-M8	70				22	40					F07
	0.79	0.55		2.76				0.87	1.57					
3"	30	20	4-M10	102				24	53					F10
	1.18	0.79		4.02				0.94	2.09					
4X3"	30	20	4-M10	102				24	53					F10
	1.18	0.79		4.02				0.94	2.09					
4"	30	20	4-M10	102				24	53					F10
	1.18	0.79		4.02				0.94	2.09					
6X4"	30	20	4-M10	102				24	53					F10
	1.18	0.79		4.02				0.94	2.09					
6"	40				12.00	43	55				58	8		F12
	1.57				0.47	1.69	2.17				2.28	0.31		
8X6"	40				12	43	55				58	8		F12
	1.57				0.47	1.69	2.17				2.28	0.31		
8"	50				14	53.5	70				71.5	9		F14
	1.97				0.55	2.11	2.76				2.81	0.35		
10X8"	50				14	53.5	70				71.5	9		F14
	1.97				0.55	2.11	2.76				2.81	0.35		
10"	50				14	53.5	70				66	9		F14
	1.97				0.55	2.11	2.76				2.60	0.35		

MERIDIAN™ TOP WORKS DIMENSIONS

ASME CLASS 300

NPS	A	B	C	D	E	F	G	H1	H2	H3	I	J	K	ISO
in	mm in	mm in	mm in	mm in	mm in	mm in	mm in	mm in	mm in	mm in	mm in	mm in	mm in	
1/2"	12 0.47	8 0.31	4-M6					8.5 0.33	20.5 0.81			25 0.98	47 1.85	
3/4"	12 0.47	8 0.31	4-M6					8.5 0.33	20.5 0.81			25 0.98	47 1.85	
1"	12 0.47	8 0.31	4-M6					9 0.35	22.5 0.89			29 1.14	53 2.09	
1 1/2"	20 0.79	14 0.55	4-M8	70 2.76				20 0.79	40 1.57					F07
2X1 1/2"	20 0.79	14 0.55	4-M8	70 2.76				20 0.79	40 1.57					F07
2"	20 0.79	14 0.55	4-M8	70 2.76				21 0.83	39 1.54					F07
3X2"	20 0.79	14 0.55	4-M8	70 2.76				21 0.83	39 1.54					F07
3"	30 1.18	20 0.79	4-M10	102 4.02				24 0.94	53 2.09					F10
4X3"	30 1.18	20 0.79	4-M10	102 4.02				24 0.94	53 2.09					F10
4"	30 1.18	20 0.79	4-M10	102 4.02				24 0.94	53 2.09					F10
6X4"	30 1.18	20 0.79	4-M10	102 4.02				24 0.94	53 2.09					F10
6"	40 1.57				12 0.47	43 1.69	55 2.17			58 2.28	8 0.31			F12
8X6"	40 1.57				12 0.47	43 1.69	55 2.17			58 2.28	8 0.31			F12
8"	50 1.97				14 0.55	53.5 2.11	70 2.76			71.5 2.81	9 0.35			F14

ASME CLASS 600

NPS	A	B	C	D	E	F	G	H1	H2	H3	I	J	K	ISO
in	mm in	mm in	mm in	mm in	mm in	mm in	mm in	mm in	mm in	mm in	mm in	mm in	mm in	
1/2"	12 0.47	8 0.31	4-M6					8.5 0.33	19.5 0.77			25 0.98	47 1.85	
3/4"	12 0.47	8 0.31	4-M6					8.5 0.33	19.5 0.77			25 0.98	47 1.85	
1"	12 0.47	8 0.31	4-M6					8.5 0.33	22.5 0.89			29 1.14	53 2.09	
1 1/2"	20 0.79	14 0.55	4-M8	70 2.76				20.5 0.81	39 1.54					F07
2X1 1/2"	20 0.79	14 0.55	4-M8	70 2.76				20.5 0.81	39 1.54					F07
2"	20 0.79	14 0.55	4-M8	70 2.76				22 0.87	39.5 1.56					F07
3X2"	20 0.79	14 0.55	4-M8	70 2.76				22 0.87	39.5 1.56					F07
3"	30 1.18	20 0.79	4-M10	102 4.02				25 0.98	51.5 2.03					F10
4X3"	30 1.18	20 0.79	4-M10	102 4.02				25 0.98	51.5 2.03					F10
4"	40 1.57	30 1.18	4-M12	125 4.92				37.5 1.48	75 2.95					F12
6X4"	40 1.57	30 1.18	4-M12	125 4.92				37.5 1.48	75 2.95					F12

MERIDIAN™ TOP WORKS DIMENSIONS

ASME CLASS 1500

NPS	A	B	C	D	E	F	G	H1	H2	H3	I	J	K	ISO
in	mm in	mm in	mm in	mm in	mm in	mm in	mm in	mm in	mm in	mm in	mm in	mm in	mm in	
1/2"	M18	12 0.47	4-M6	50 1.97				18.5 0.73	29.5 1.16					F05
3/4"	M18	12 0.47	4-M6	50 1.97				21 0.83	31 1.22					F05
1"	M22	14 0.55	4-M6	50 1.97				25 0.98	36.5 1.44					F05
1 1/2"	M27	18 0.71	4-M8	70 2.76				28 1.10	40 1.57					F07
2X1 1/2"	M27	18 0.71	4-M8	70 2.76				28 1.10	40 1.57					F07
2"	M33	25 0.98	4-M10	102 4.02				36 1.42	49 1.93					F10

NOTE: Drawings are representative, please contact Meridian for specific and current PDF drawings.

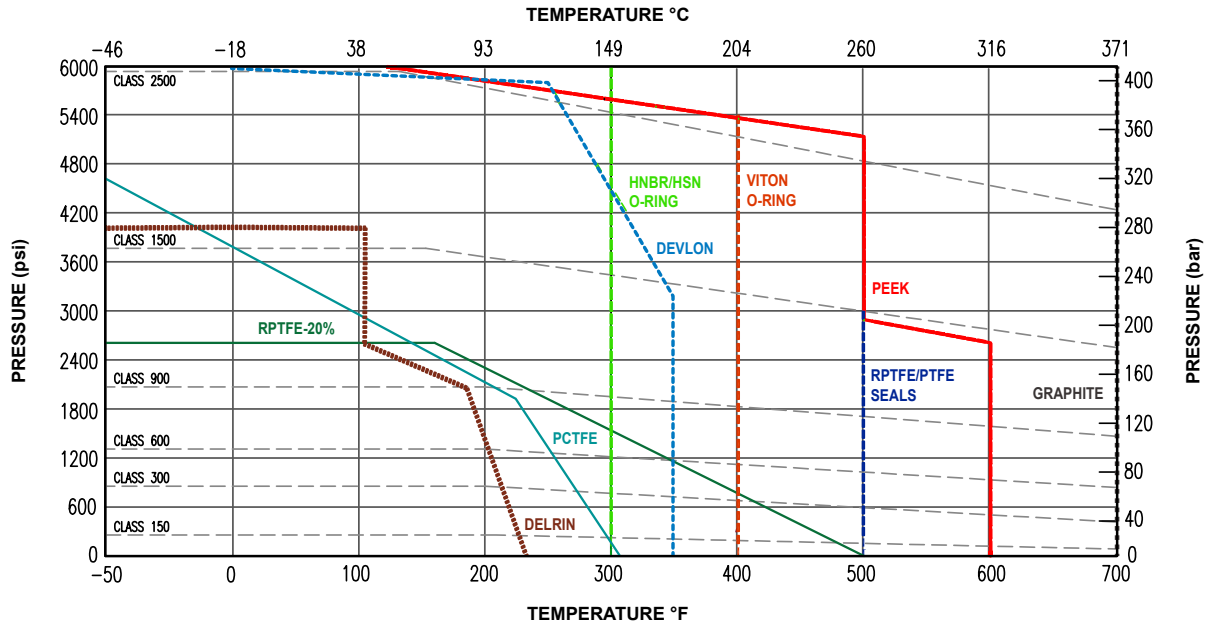
TORQUE DATA

Size (In)	Open (break) torque (inch pounds) at Max. P				
	150 #	300 #	600 #	900 #	1500 #
1/2"	92	145	167		490
3/4"	145	184	239		645
1"	184	237	323		1278
1 1/2"	447	644	872	1278	1649
2"	591	1051	1290	2366	3800
3"	1183	1682	3202		
4"	1906	3076	5114		
6"	7097	11238			
8"	12420	23658			
10"	23658				

Notes:

- Torque values are in inch pounds. To convert to Newton meters divide inch pounds by 8.85.
Torque includes safety factor.
- For clean wet applications in low temperature service below -20 Deg C (-4 Deg F) add 10% safety.
- Add additional safety if service conditions dictate.
- For reduced port valves select torque based on valve port size.
For example: 4" x 3" x 300# ASME valve – use torque for 3" x 300# ASME valve.
- Class 150/300 have RPTFE seats. Class 600-1500 have Devlon seats.

MERIDIAN™ REFERENCE PRESSURE/TEMPERATURE CHART



Please consult ASME B16.34 for specific body material pressure / temperature ratings. The above chart is for reference only, please consult Meridian for specific / additional seat and seal technical information if required.

CV CHART VALUES: FULL PORT VALVES

Size (In)	CV Values				
	150 #	300 #	600 #	900 #	1500 #
1/2"	46	46	46		41
3/4"	97	97	97		88
1"	168	168	168		152
1 1/2"	389	389	389		350
2"	647	647	647	599	582
3"	2086	2086	2086		
4"	2694	2694	2694		
6"	6062	6062			
8"	10885	10885			
10"	17109				

CV CHART VALUES: REDUCED PORT VALVES

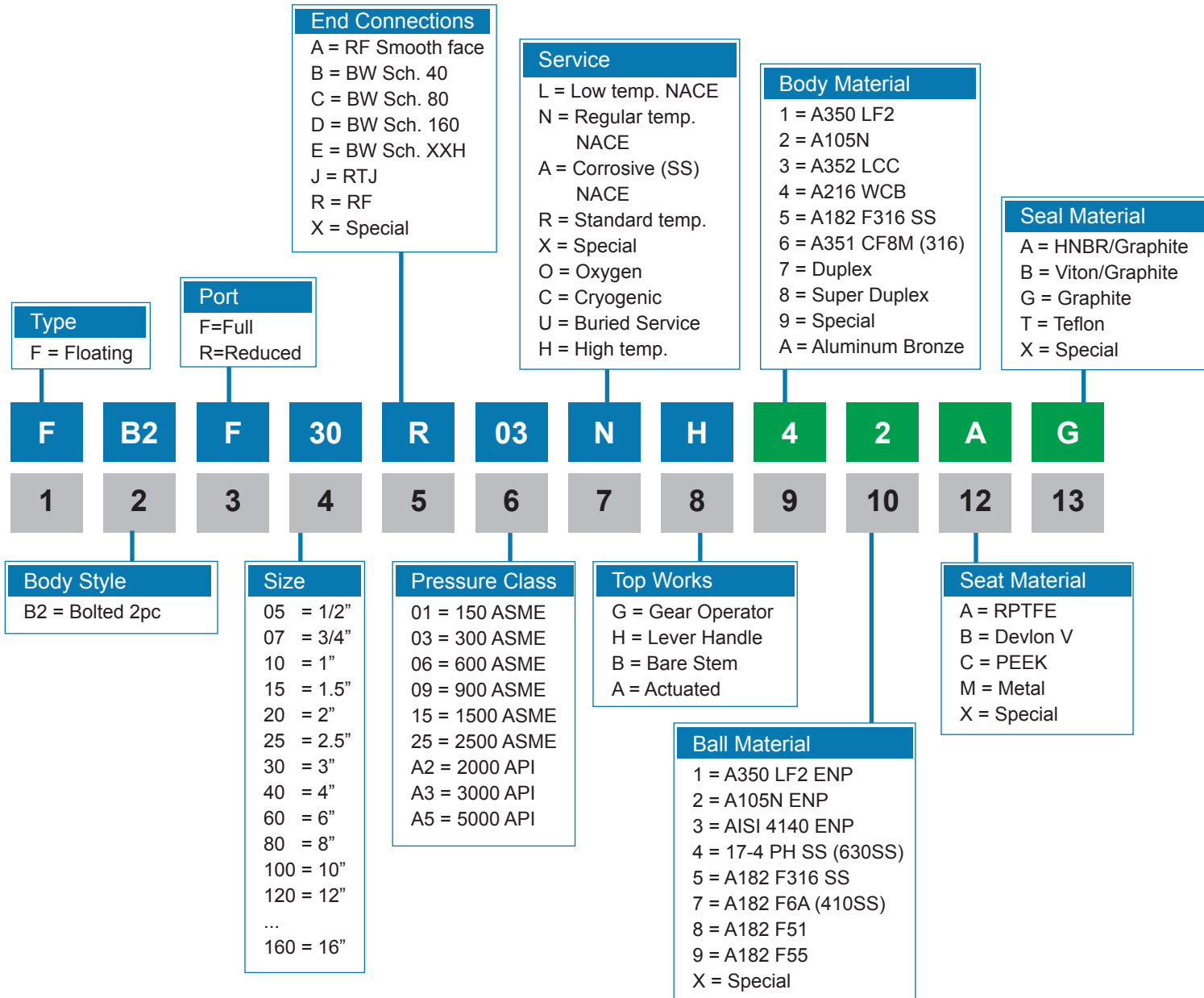
Size (In)	CV Values				
	150 #	300 #	600 #	900 #	1500 #
2 x 1 1/2	306	306	306	306	306
3 x 2	377	377	377	377	
4 x 3	1043	1043	1043		
6 x 4	1587	1587	1587		
8 x 6	4364	4364			
10 x 8	7495				

Note:

1. Flow coefficient Cv is the volume (in US gallons) of water at 60°F that will flow per minute through a valve with a pressure drop of 1 psi across the valve.

HOW TO ORDER

ORDERING FIGURE NUMBER CHART



Example valve figure number: **FB2F30R03NH42AG**

This code represents a Meridian™ floating ball valve, with a bolted 2 piece body, full port bore, 3", raised face end connection, 300 ASME, regular temperature NACE body, lever handle, A216 WCB body, A105N ENP ball, RPTFE seat and Graphite seal.



To learn more about Meridian™ please visit our website at:
www.meridianvalve.ca

Meridian™ is a registered trademark of Wolseley Industrial Canada Inc. (Wolseley Industrial)
The contents hereof are confidential and proprietary. Any unauthorized reproduction or disclosure, in whole or in part, is strictly prohibited.
The material in this catalogue is for general information only, may not reflect the most current product information and is not guaranteed to be complete and may not be used or relied upon for specific performance data or for the purposes of material selection or determining suitability without first consulting Wolseley Industrial. Wolseley Industrial reserves the right to change this information without notice. Wolseley Industrial expressly disclaims any and all liability or damages arising or resulting from the use of or reliance upon the information in this catalogue.